

A website that's full of useful information about studying in Hokkaido

**Visit the *STUDY IN HOKKAIDO* website!**

<https://study-hokkaido.com>



- Information on scholarships, housing, Japanese language study support, and other support for studying abroad is provided.
- You can find a university that meets your study objectives from the list of universities in Hokkaido.
- You can search for articles posted on social media sites by international students in their native languages.
- Information on visas, immigration procedures, and other general study-abroad matters is available.

Overseas student support site

# STUDY IN HOKKAIDO

Hokkaido has the ideal environment for university life.

|                                       |                                |  |
|---------------------------------------|--------------------------------|--|
| Welcome to Hokkaido                   | Universities in Hokkaido(2025) | HIECC Newsletter (back number)           |
| Useful Information                    | Links                          | Hokkaido Foreign Resident Support Center |
| SNS posts from international students | Guidebook(PDF)                 |  |

This site is operated by the Hokkaido International Exchange and Cooperation Center (HIECC) and subsidized by the Hokkaido government.

Opinions and Inquiries [Click here](#)



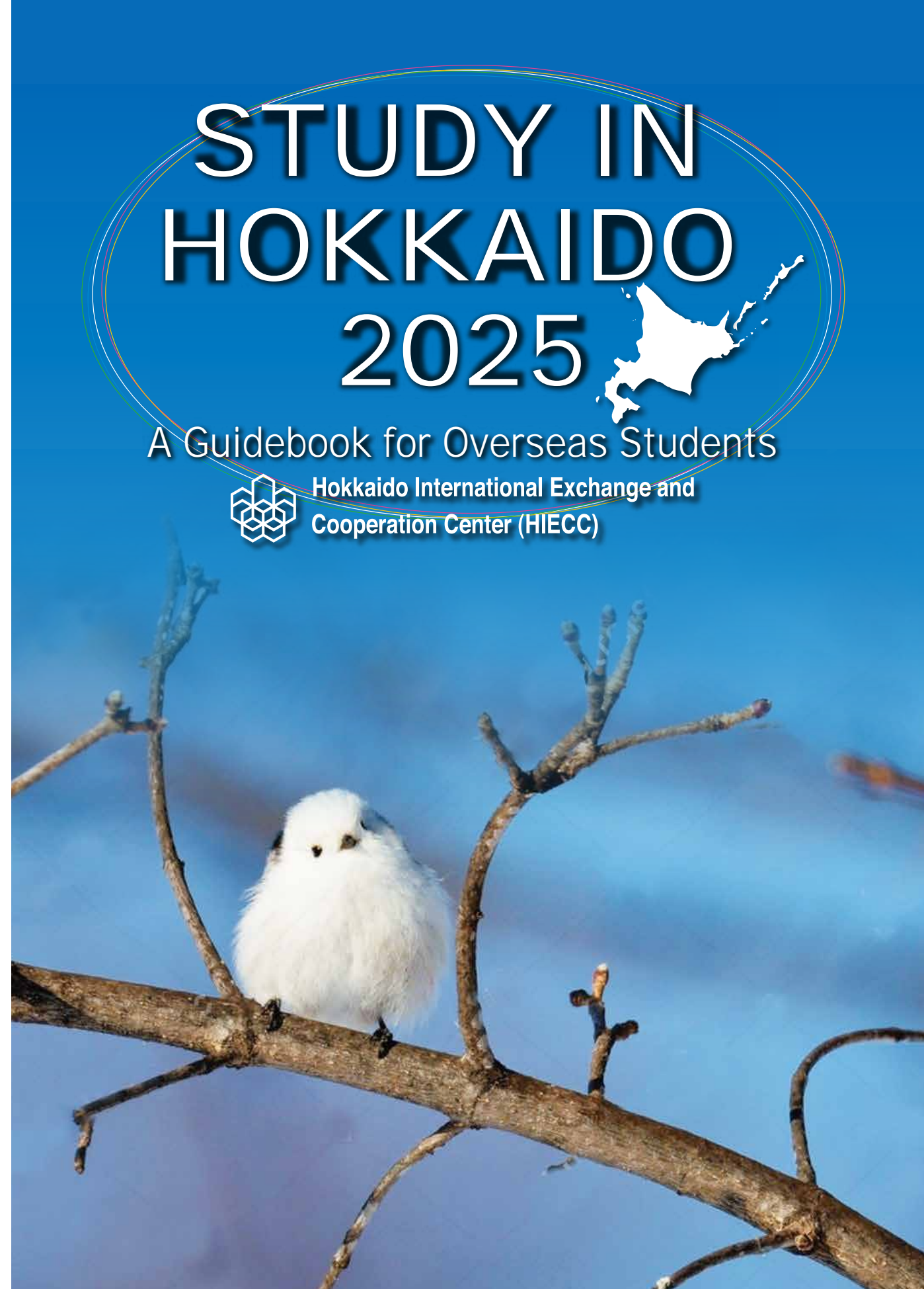
# STUDY IN HOKKAIDO 2025



A Guidebook for Overseas Students



Hokkaido International Exchange and  
Cooperation Center (HIECC)





# To all students

Hokkaido is a safe and comfortable place to live and has a great environment for one's university life.

There is a full range of educational institutions covering various fields such as science, engineering, agriculture, medicine, dentistry, literature, environment, management, information, welfare, culture, fashion, animation, music, and cooking, allowing students to receive the education that meets their goals. The education offered in this prefecture is also of a high quality, as evidenced by the recent Nobel Prize winner from one of the universities in Hokkaido.

The four seasons in Hokkaido offer a varied experience of nature, and on your days off you can participate in various activities depending on the season, such as hiking in the summer and skiing in the winter. Hokkaido is also famous for its safe and delicious food, and the many hot springs serve as havens of relaxation when you are tired.

Above all, the people of Hokkaido are very friendly toward people from other countries, and support is available when you have any problems, so one can live with peace of mind.

Currently, there are 54 universities in Hokkaido attended by approximately 2,800 international students. Interaction with Japanese students and fellow international students will also add color to your experience in Hokkaido.

If you are considering studying abroad, please come to a university in Hokkaido. We are looking forward to seeing you here.



# List of universities in Hokkaido

Since only universities that gave permission appear on the list, some universities in Hokkaido are not listed here.

| University name   | Location   | Type                | Scholarships | Dormitory | Comprehensive Renters Insurance system | Short-term study program <sup>*1</sup> | Presence of departments/ subjects providing courses in English <sup>*2</sup> | Presence of departments/ subjects providing courses in Japanese |
|---|--|---------------------|--------------|-----------|--|--|--|---|
| Asahikawa Medical University  | ASAHIKAWA  | National university | ○            |           | ○                                      |  | D  | ○   |
| <sup>6p</sup> Hokkaido University                                       | SAPPORO  | National university | ○            | ○         |  | ◎                                      | D/M/B  | ○   |
| Hokkaido University of Education  | SAPPORO<br>ASAHIKAWA<br>KUSHIRO<br>HAKODATE<br>IWAMIZAWA | National university | ○            | ○         | ○                                      | ◎                                      |  | ○   |
| <sup>7p</sup> Kitami Institute of Technology                            | KITAMI   | National university | ○            | ○         |  | ◎                                      |  | ○   |
| <sup>8p</sup> Muroran Institute of Technology                           | MURORAN  | National university | ○            | ○         | ○                                      | ◎                                      | D/M  | ○   |
| <sup>9p</sup> Obihiro University of Agriculture and Veterinary Medicine | OBIHIRO  | National university | ○            | ○         | ○                                      | △                                      | D/M  | ○   |
| <sup>10p</sup> Otaru University of Commerce                             | OTARU  | National university | ○            | ○         |  | △                                      | M  | ○   |
| <sup>11p</sup> Asahikawa City University                                | ASAHIKAWA  | Public university   |              | ○         |  | ◎                                      | M  |   |
| Chitose Institute of Sciences and Technology                            | CHITOSE  | Public university   |              |           |  |  |  |   |

<sup>\*1</sup>. ◎: Open to students from partner universities only;  
△: Open to students from non-partner universities as well  
<sup>\*2</sup>. D: Doctor; M: Master; B: Bachelor

For details, please contact each university directly.⇒ <https://www.study-hokkaido.com/list.html>

| University name                                       | Location      | Type               | Scholarships | Dormitory | Comprehensive Renters Insurance system | Short-term study program <sup>*1</sup> | Presence of departments/ subjects providing courses in English <sup>*2</sup> | Presence of departments/ subjects providing courses in Japanese |
|---|---------------|--------------------|--------------|-----------|--|--|--|---|
| <sup>12p</sup> Health Sciences University of Hokkaido | TOBETSU       | Private university | ○            |           |  |  | D  | ○   |
| <sup>13p</sup> Hokkaido University of Science         | SAPPORO       | Private university |              |           |  |  |  |   |
| Hokkaido Bunkyo University                            | ENIWA         | Private university | ○            |           | ○                                      | ◎                                      | M/B  | ○   |
| Hokkaido Chitose College of Rehabilitation            | CHITOSE       | Private university |              |           |  |  |  |   |
| <sup>14p</sup> Hokkaido Information University        | EBETSU        | Private university | ○            | ○         | ○                                      | △                                      |  | ○   |
| Hokkai-Gakuen University                              | SAPPORO       | Private university | ○            |           |  | ◎                                      |  |   |
| <sup>15p</sup> Rakuno Gakuen University               | EBETSU        | Private university |              | ○         | ○                                      | ◎                                      | D/M  |   |
| <sup>16p</sup> Sapporo Gakuin University              | EBETSU        | Private university | ○            |           |  | ◎                                      |  |   |
| <sup>17p</sup> Sapporo International University       | SAPPORO       | Private university | ○            |           |  | ◎                                      |  | ○   |
| <sup>18p</sup> Sapporo University                     | SAPPORO       | Private university | ○            |           | ○                                      |  |  | ○   |
| <sup>19p</sup> Seisa Dohto University                 | KITAHIROSHIMA | Private university | ○            |           |  | △                                      |  | ○   |
| <sup>20p</sup> Tokai University Sapporo Campus        | SAPPORO       | Private university | ○            |           |  | ◎                                      |  | ○   |





#### International Programs and Study Areas

**Bachelor** ✓ Modern Japanese Studies Program(MJSP)  
✓ Integrated Science Program(ISP)

#### Other Programs

**Short Term Program** HUSTEP, Japanese Language and Culture Studies Program(JLCS), Hokkaido Summer Institute(HSI)

#### Finances

| Fees   | Cost   |
|--|--|
| <b>Application fee</b>   | Undergraduate: 17,000JPY<br>Graduate: 30,000JPY  |
| <b>Admission fee</b>   | 282,000JPY   |
| <b>Tuition fee</b>   | 535,800JPY/year  |
| <b>Accommodation rent</b>  | <p><b>[On Campus]</b><br/>Student dormitory: 4,300JPY – 49,000JPY/month</p> <p><b>[Off Campus]</b><br/>Private accommodation: 35,000JPY – 45,000JPY/month</p> <p>★Visit <a href="https://www.global.hokudai.ac.jp/university-life/housing/">https://www.global.hokudai.ac.jp/university-life/housing/</a> for more information on housing.</p> |
| <b>Living costs</b><br>(food, clothing, transportation, books, etc.) | Approx. 45,000-70,000JPY/month   |

#### Contact Info

**Address(Sapporo Campus):**  
Kita 17, Nishi 8, Kita-ku, Sapporo, Hokkaido, 060-0817 Japan  
**University's Website(English):** <https://www.global.hokudai.ac.jp/>  
**Admission Inquiries(Undergraduate):** admission@academic.hokudai.ac.jp  
**Admission Inquiries(Graduate):** Please contact the relevant department.

**Master and Doctor** Law / Education / Economics and Business / International Media, Communication, and Tourism Studies / Humanities and Human Sciences / Public Policy / Health Sciences / Medicine / Dental Medicine / Veterinary Medicine / Biomedical Science and Engineering / Infectious Diseases / Fisheries Sciences / Environmental Science / Science / Agriculture / Life Science / Engineering / Chemical Sciences and Engineering / Global Food Resources / Information Science and Technology

★For details, please visit <https://www.global.hokudai.ac.jp/about/publications/international-student-guide/> and contact the relevant department in the brochure for more information.



#### Scholarship Program and Tuition Waiver

**Scholarships** Each international program has different kinds of scholarships.  
For more information, visit <https://www.global.hokudai.ac.jp/admissions/scholarships/> and websites of each program.

**Tuition Waiver** 25%, 50%, 100%

#### Number of Students

(Data as of May 1, 2024)

Total of Students: 17,555



1,912  
int'l students from  
95  
countries/regions

# KITAMI INSTITUTE OF TECHNOLOGY



#### OUR LOCATION:



#### LIVING EXPENSES (per month):

**Accommodation:** JPY 18,000— JPY 35,000

**Personal Expenses:** around JPY 50,000

**Average Total Expenses:** around JPY 75,000

#### OUR PROGRAMS:

**4-year undergraduate programs\*** at one of two schools:

- ★School of Earth, Energy and Environmental Engineering
- ★School of Regional Innovation and Social Design Engineering

**Application Period:**  
**Mid-End of January**

Students choose from **8 different course programs**:

Applied Energy, Environment Protection and Disaster Prevention, Advanced Materials, Intelligent Machines and Biomechanics, Information Design and Communication, Civil Infrastructure, Biotechnology and Food Chemistry, Regional Management Engineering

**2-year master's programs\*** in the fields of:

Mechanical and Electronic Engineering  
Civil and Environmental Engineering  
Information and Communication Engineering  
Applied Chemistry  
Management Engineering

**3-year doctoral programs** in the research fields of:

Mechanical and Electrical Engineering  
Civil and Environmental Engineering  
Information and Communication Engineering  
Applied Chemistry

**Short-term exchange programs** for

students enrolled at KIT's partner institutions

**Application Period : June & January**

\*most courses in the undergraduate and master program held in Japanese only, partly in English



#### Contact:

**International Center**  
TEL: +81-157-26-9370  
Email: kenkyu05@desk.kitami-it.ac.jp  
Website: <https://www.kitami-it.ac.jp>





NATIONAL UNIVERSITY CORPORATION

**MURORAN**

**INSTITUTE OF TECHNOLOGY**

90min from Sapporo  
60min from New Chitose Airport



*Where is Muroran?*

*Dolphin Watching*



*Swan Bridge*



*Factory Night View*



*Cape Chikyu*



### Undergraduate

Engineering

Sciences and Informatics

### Master's course

Division of Sustainable and Environmental Engineering

Division of Production Systems Engineering

Division of Information and Electronic Engineering

### Doctoral course

Division of Engineering

- Advanced Sustainable and Environmental Engineering
- Advanced Production Systems Engineering
- Advanced Information and Electronic Engineering



### Short-term study

Research student : 3 months to 1 year  
(Graduate student)

Auditing student : 1 semester to 2 semester  
(Graduate student and Undergraduate student)

### Support

- Fulfilling scholarship program
- Admission/ Tuition fee exemption system
- Summer study tour, Ski tour

### Dormitory

- Dormitory 1  
(For male students : triple bed room)  
Rent: 6500 JPY / month  
Utility: About 10000 JPY / month
- Dormitory 2  
(For short-term students : single room)  
Rent: 5900 JPY / month  
Utility: About 15000 JPY / month

### Database of Researchers



<https://rdsoran.muroran-it.ac.jp/search?m=home&l=en>



### Contact

URL: <https://u.muroran-it.ac.jp/oia/en/index.html>  
Center for International Relations  
Muroran Institute of Technology  
27-1, Mizumoto-cho, Muroran-shi, Hokkaido  
TEL: +81-143-46-5880 / FAX: +81-143-46-5889  
Email: [kokusai@muroran-it.ac.jp](mailto:kokusai@muroran-it.ac.jp)

# Obihiro University of Agriculture and Veterinary Medicine

Our mission is to advance related knowledge and expanding practical learning, and contribute to regional and international societies by training individuals who have skills in sustainable agriculture to protect our food resources.

will find that OUAVM offers you a high quality of education in various fields of agriculture and animal science, friendly support services, and a lively campus life.

### Where is Obihiro Located?

Located 200 km east from Sapporo, in the center of the Tokachi Plain and among Japan's foremost food production bases.

OUAVM is only 5 km from the city center and easily accessible by car, bicycle and bus.



### Education

**Undergraduate Schools of Animal and Agriculture**

- School of Cooperative Veterinary Medicine
- School of Agriculture

**Graduate School of Animal and Veterinary Sciences and Agriculture**

- Master's Program of Animal Science and Agriculture
- Doctoral Program of Animal Science and Agriculture
- Doctoral Program of Veterinary Science

Full details can be found at:

<https://www.obihio.ac.jp/en/navi-grad-sch-anim-vet-sci-agric>

### Lectures in English

Master's and Doctoral Programs in Animal and Veterinary Sciences and Agriculture offer bilingual lectures



### Japanese Language Education

Japanese language courses for the international student are offered.

### Accommodation

The University offers self-catered accommodation on campus. The accommodation fee for a single student is from 4,600 yen per month. For further information, please visit:

<https://www.obihio.ac.jp/en/dormitory>



### Any Questions?

For detailed information about applying and studying at OUAVM, please visit our Web site at:  
<https://www.obihio.ac.jp/en/grad-adm>

If you have any questions, please feel free to contact either your prospective supervisor or the International Student Office. We will be very happy to help you:

**International Student Office**

TEL: +81-155-49-5298

FAX: +81-155-48-5319

Email: [rgk@obihio.ac.jp](mailto:rgk@obihio.ac.jp)





# Otaru University of Commerce 小樽商科大学

OUC Since 1911

The only national university specialized in Commerce

日本のビジネスを学ぶ。

Together in Japan

## Faculty of Commerce

- Department of Economics
- Department of Commerce
- Department of Law
- Department of Information and Management Science

## Degree Programs

- Undergraduate program\*
- Graduate program

## Global Education Programs

- YOUC Program\*\*
- \* In Japanese language
- \*\* In English language



### Features of YOUC Program:

- One year or One semester course in English
- a room of 12800 yen rent per month at the International House



**Access (Otaru-Sapporo)**  
35 minutes by train (rapid)

### Services and Opportunities for International Students

- Tutoring Service
- International House etc..

Experience Hokkaido! YOUC Program- A Year at Otaru University of Commerce



### Otaru University of Commerce

Contact:  
International Office  
TEL:+81-134-27-5262/5263  
FAX:+81-134-27-5264  
EMAIL:inljimu@office.otaru-uc.ac.jp

<https://www.otaru-uc.ac.jp/>  
<https://english.otaru-uc.ac.jp/youc/>



## Asahikawa City University

- Faculty of Economics
  - Department of Managerial Economics
- Faculty of Health and Welfare Science
  - Department of Community and Social Welfare
- NEW ! ●Faculty of Regional Creation (Applying for installation approval)
  - Department of Health and Nursing
  - Department of Regional Creation (Applying for installation approval)



## Graduate School of Asahikawa City University

- Graduate School of Regional Policy

## Asahikawa City University Junior College

- Department of Food and Nutrition
- Department of Preschool Education



## We have a International Exchange Circle

We are planning to the day trip and funny events. Join us !



## Financial Aid

Tuition Reduction and Exemption System for Privately Financed International Students (Limited number)  
Target audience: Foreign students enrolled at this university who are recognized as having difficulty continuing their studies due to financial reasons.

Selection method: Document screening and interview

Reduction amount: 100,000 yen (annual)

※There are also many external scholarship programs available (screening and selection procedures required).

## Location

Our university is in Asahikawa, the second largest city in Hokkaido, with a population of about 300,000. Asahikawa sits in the center of Hokkaido, in a high basin between mountain ranges, close to the largest national park in Japan. The city is linked to Sapporo by Japan Rail. Asahikawa Airport provides direct air connections to major centers like Tokyo(1hr.35min.).



3-23, NAGAYAMA, ASAHIKAWA, HOKKAIDO, 079-8501 JAPAN  
TEL:+81-166 -48 -3121 URL:<http://www.asahikawa-u.ac.jp>



Overseas Clinical Practice at School of Dentistry  
University of Gothenburg (Sweden)



## Interprofessional Education as a Foundation Developing Global Healthcare Professionals



Overseas Clinical Practice at School of Dentistry  
Hospitals in Thuringia (Germany)

### Opening 2028-A New Campus at HOKKAIDO BALLPARK F VILLAGE in Kitahiroshima

**International Student Portal Site**



**Schools**

- School of Pharmaceutical Sciences
- School of Dentistry
- School of Nursing and Social Work
- School of Psychological science
- School of Rehabilitation Sciences
- School of Medical Technology
- Dental Hygiene School (3-year program)



**Contact us**  
Health Sciences University of Hokkaido  
Admissions and Public Affairs Section

1757 Kanazawa, Tobetsu-cho, Ishikari-gun, Hokkaido  
061-0293 JAPAN  
TEL: +81-133-23-1211 ✉: [nyushi@hoku-iryo-u.ac.jp](mailto:nyushi@hoku-iryo-u.ac.jp)

北海道医療大学  
Hokkaido University of Health Sciences

**Hokkaido University of Science**



### What's HUS?

Hokkaido University of Science has 5 faculties and 13 departments.  
HUS students learn to become active professionals in the fields of engineering, medical care, social science, and pharmacy.

### Organisation Chart

- Faculty of Engineering
  - Department of Mechanical Engineering
  - Department of Electrical and Electronic Engineering
  - Department of Architecture
  - Department of Civil and Environmental Engineering
- Faculty of Information Science and technology
  - Department of Information Science and technology
- Faculty of Pharmaceutical Sciences
  - Department of Pharmacy
- Faculty of Health Sciences
  - Department of Nursing
  - Department of Physical Therapy
  - Department of Prosthetics and Orthotics \*
  - Department of Clinical Engineering
  - Department of Radiological Technology
- Faculty of Future Design
  - Department of Media Arts and Design
  - Department of Humanity and Social Science



\* Department of Prosthetics and Orthotics stop accepting applications from the 2024 entrance examinations.

### Access & Maps



TEINEKU  
SAPPORO  
JR Teine Station  
JR Sapporo Station  
JR New Chitose Airport Station

※5minutes by taxi, 9minutes by bus or 25minutes on foot from JR Teine Station.

### Contact

If you are interested in HUS, please contact us using the contact information below !



URL: <https://www.hus.ac.jp/eng/>  
TEL : +81-11-681-2161  
FAX: +81-11-681-3622

I can't wait to see you at HUS!







Information and Communication Technology - One step ahead

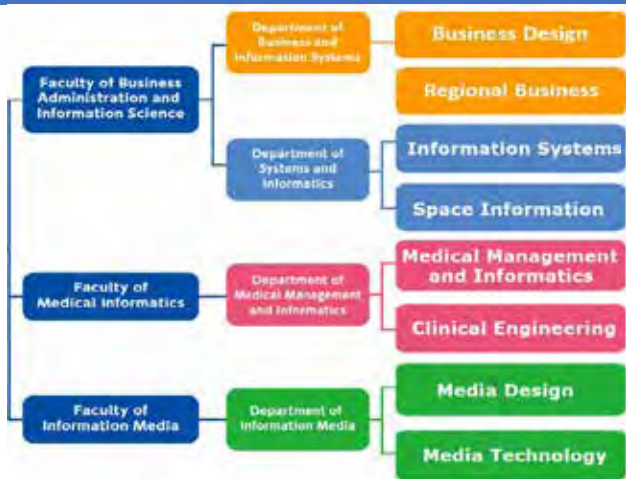
# Hokkaido Information University

## Founding Principle

Hokkaido Information University was founded in 1989 by Dr. Saburo Matsuo, a pioneer of information education in Japan, with the goal of creating a university with new academic fields for an information-oriented society.



## Faculties and Courses



## Educational Aims

The goal of Hokkaido Information University (HIU) is to educate new generations of professionals capable of independently identifying and addressing problems using information and communication technologies (ICT) while developing an open mind, self expression skills and teamwork competence. To achieve this aim, HIU seeks to admit students who can demonstrate a sound scholastic ability in addition to possessing the necessary reading, comprehension and language skills. The ability to think logically and the motivation to both learn and be involved in other extracurricular activities are also greatly valued.

## Graduate School of Business Administration and Information

Digital Business Management

Medical & Healthcare IT

System Design

Creative Media



## For further information

Official website  
<http://www.do-johodai.ac.jp/>  
 Facebook  
<https://www.facebook.com/johodai/>

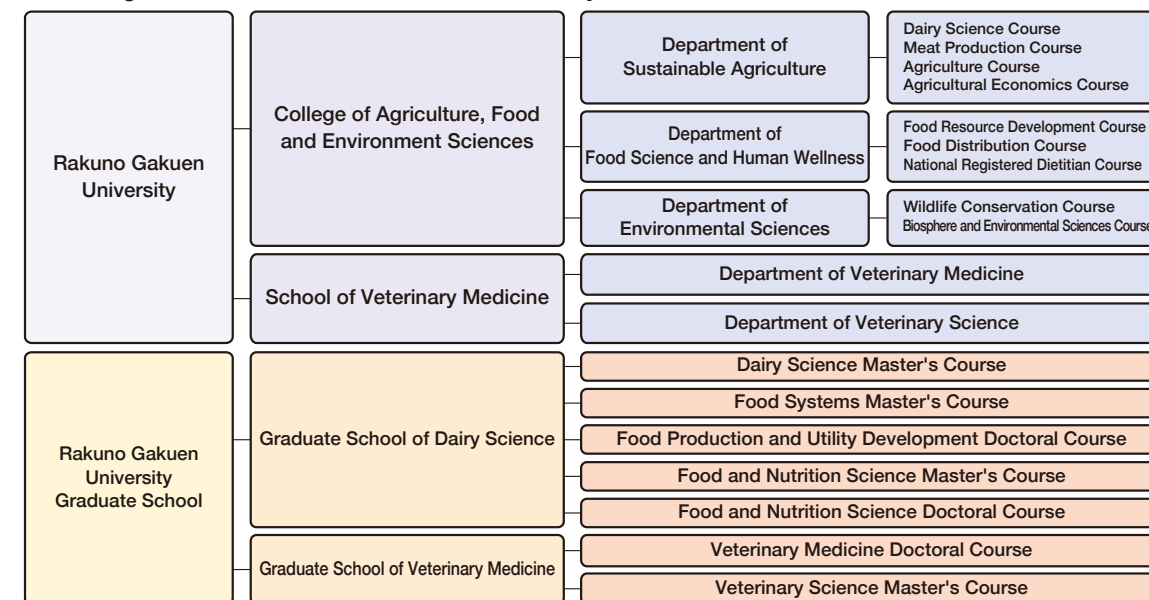


582, Bunkyo-dai-Midorimachi Ebetsu-shi  
 Hokkaido 069-8501, Japan  
 TEL. +81-11-386-1111  
 FAX. +81-11-386-1214



Rakuno Gakuen was established in 1960 with the Department of Dairy Science. With the San-ai Motto (Love God, Love People, Love Earth) rooted in Christianity as the pillar of education, the school has since strived to nurture individuals who have a rich sense of humanity and academic expertise and lead their generations, through practical education based on the philosophy that "Healthy Earth, Healthy People." Today, the university consists of the College of Agriculture, Food and Environment Sciences (three departments), the School of Veterinary Medicine (two departments) and two graduate schools (seven doctoral and master's courses), and is engaged in the highest level of education and research.

## The College and Schools of Rakuno Gakuen University







### Ebetsu Campus

#### ■ Faculty of Humanity

- ▶ Department of Human Science
- ▶ Department of English Language and Literature
- ▶ Department of Child Development

#### ■ Faculty of Law

- ▶ Department of Jurisprudence

### Shin Sapporo Campus

#### ■ Faculty of Economics and Business

- ▶ Department of Economics
- ▶ Department of business Administration

#### ■ Faculty of Psychology

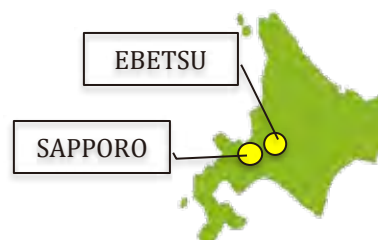
- ▶ Department of Clinical Psychology

- Scholarships based on Japanese skills and academic records after admission.
- Buddy support available as necessary.
- You will be eligible for taking exams for curator license and FP qualification etc.



- Ebetsu Campus: Quiet natural environment. 10 min. walk to the sports ground with large fields, equipped with training rooms. 9 min on foot to JR Oasa Station, and approx. 15 min. to Sapporo Station by train.
- Shinsapporo Campus: About a minute to the nearest subway station, and 5 to JR station. 20 min. to subway Odori station, 8 to JR Sapporo Station.
- About 15 min. between the two campuses by bus (JR Hokkaido).

SGU has campuses in Ebetsu and in Sapporo.



SGU Official website



Japanese



English



### Overview

Sapporo International University (SIU) aims to foster the abilities to think, to take action, and to reflect for students. Diverse individuals coming together at SIU creates a well-rounded educational environments. Students also have opportunity to acquire a rich international perspective, as well as to become more deeply connected with local community in order to support the future.

Our campus is located in the suburb of Sapporo, the central city of Hokkaido. It takes only 25 minutes to downtown by bus and subway. The location is convenient for international students as it is about 60 minutes by bus to New Chitose Airport.



I'm Kokusaikun  
SIU's mascot



### Undergraduate

#### Faculty of Tourism

Department of Tourism Business

#### Faculty of Humanities

Department of Liberal Arts and Global Studies

Department of Psychology: Clinical Psychology Program

Department of Psychology: Child Psychology Program

#### Faculty of Sports and Human Studies

Department of Sports Business

Department of Sports Instruction

#### Junior College

Department of Human Development and Career Studies

Department of Early Childhood Education and Childcare

### Faculty and Department

#### Graduate School

Graduate School of Tourism

Graduate School of Psychology

Graduate School of Sports and Health Instruction



### Support System

#### Accommodation

Furnished apartment

- Monthly rent: JPY 30,000 approx.
- Bed, curtains, appliances (TV, refrigerator, washing machine, microwave) etc.

#### Financial Support

- 50% or 100% deduction for entrance fee
- 35%, 50% or 100% deduction for tuition
- The reduction rate is based on entrance exam's result (new students) and academic record(enrolled students)

#### Multilingual Support

- Multilingual staff at International Affairs Division to help with various procedures
- English, Chinese (Mandarin & Cantonese), Korean, and Vietnamese

#### Others

- Japanese classes according to level
- Academic and living consultation
- Support for job-hunting
- Providing scholarship information

### Contact Information

Sapporo International University  
Address: 1-4-1, Kiyota 4-jo, Kiyota-ku, Sapporo  
Hokkaido 004-8602 JAPAN Tel: (+81) 11 881 8844

Official website for international students:  
[https://www.siu.ac.jp/os\\_abroad/jp/](https://www.siu.ac.jp/os_abroad/jp/)  
E-mail: [siu-ec@ad.siu.ac.jp](mailto:siu-ec@ad.siu.ac.jp)



- ◆ Sapporo University has accepted the great number of international students from all over the world.
- ◆ Sapporo University takes care of international students nicely and warmly.



《Contact Information》  
Sapporo University International Communication Center  
3-1, 3-7, Nishioka, Toyohira-ku, Sapporo 062-8520 JAPAN  
Tel. +81-11-852-9138 E-mail. suicc@ofc.sapporo-u.ac.jp  
Website. <https://intl.sapporo-u.ac.jp/ja/>



## Overview

- ▶ There is a wide variety of majors to learn.
- ▶ There are Japanese Language classes for Beginner and Intermediate.
- ▶ SU campus with full of green is close to downtown.

## Introduction of Majors

... Popular majors

|                               |                         |                     |
|-------------------------------|-------------------------|---------------------|
| Economics                     | Business Administration | Law                 |
| English                       | <b>8 Majors</b>         | History and Culture |
| Japanese Language and Culture | Sports                  | Liberal Arts        |

## Support System

- ▶ Waving tuition fees (20%) + Scholarship (10%)
- ▶ International events with Japanese students
- ▶ Apartments where you live after arriving Sapporo
- ▶ Official SNS that you can contact us anytime
- ▶ Teachers and staff with international languages



## Voice of International Students



Junior of Business Administration  
CHEN RUI (CHINA)

There are two reasons I ultimately chose Sapporo University (SU), after being accepted by six universities including SU.

1. Curriculum at SU is more flexible than others. We study in the first year without deciding on a major, and proceed to a major you are interested in in the second year.
2. We have small classes. Since we have more opportunities to interact with other students and teachers, it's easier to share our worries and problems.



Alumna of Business Administration  
NGUYEN THI DUYEN (VIETNAM)

The scenery in Hokkaido is very beautiful and the air is clear. I like to ride my bike for walks in nearby parks and other places to enjoy the scenery. The winter here is long and it's hard to go to school and go outside, but the snow and winter scenery are very beautiful.

## Career path after graduation (2018~2025)

- ▶ Employment
  - ANA Kansai Airport Co. Ltd.
  - Bic Camera, Inc.
  - Hilton (Okinawa Miyakojima Resort)
  - NITORI Holdings Co. Ltd.
  - Shigira seven Miles Resort
  - Times Mobility Co., LTD
- ▶ Graduate School
  - Osaka University
  - Hokkaido University
  - Nagoya University
  - Tokyo University of Foreign Studies



## University overview

Seisa Dohto University has over forty years of history and one of our missions has always been to educate those who can contribute to the development of industry, culture and society. The university consists of three faculties, and students are encouraged to study closely with the teachers and to get involved in the local community. As SDU is a relatively small university, we can provide students with a warm and supportive environment.

Our campus is located in Kitahiroshima City, which is midway between Sapporo and Chitose City. The city has been chosen as the most livable town within Hokkaido for the past five years. Hokkaido Nippon-Ham Fighters, a professional baseball club from the area, is going to have a brand-new ballpark in Kitahiroshima City in 2023. It is expected that the new ballpark will bring more business and employment opportunities and contribute to the future development of the city.

## Departments and Japanese Studies

| Department of Management  | Department of Social Welfare  | Department of Design  | Department of Architecture  |
|---|---|---|---|
| Obtaining necessary skills which are essential for any business along with specifically learn about sports related business management. | Idealizing the means of creating a society where everyone can expect safety and wealth equally in a realistic and practical form. | Evolving own creativity by learning a wide range of designs and arts, and leading to artistic careers including media and advertisement industry. | Enriching students' skills of architectural design and leading them to obtain careers in architectural and interior-related industries. |
|   |   |   |   |
| <b>Majors</b><br>• Sports<br>• Management   | <b>Majors</b><br>• Social Welfare<br>• Childcare<br>• Education   | <b>Majors</b><br>• Design<br>• Arts<br>• Illustration and Manga   | <b>Majors</b><br>• Architecture Professional<br>• Architectural Design  |

## School of Japanese (Bekka)



This course aims to develop students' Japanese language skills to a college/university level; from JLPT N4 level to N2 or N1. Throughout the one year of study, students will learn about Japanese culture and society along with developing overall fundamental Japanese language skills such as grammar, vocabulary, reading and writing to achieve their academic targets.

## Intensive Japanese Language Program

SDU welcomes students from around the world to our short term academic and cultural learning opportunities in Hokkaido. The program starts twice in a year; summer and winter. Students visit famous sites of Hokkaido as off-campus activities weekly. The course is more experience based, and more practical and conversational Japanese are taught in the classes.



## Admissions

| Admission by semester |       |         | Japanese level | Selection Process                          |
|-----------------------|-------|---------|----------------|--|
| Faculties/Department  | April | October |                |  |
| Management            | ✓     | ✓       | JLPT N2        | 1. Screening<br>2. Writing<br>3. Interview |
| Social Welfare        | ✓     | ✓       |                |  |
| Design                | ✓     | ✓       |                |  |
| Architecture          | ✓     | ×       |                |  |
| School of Japanese    | ✓     | ✓       | N4             | Screening                                  |

\* For the detailed application dates, please refer our website.

\* Scholarships for international students are available.





# TOKAI UNIVERSITY SAPPORO



Located on the outskirts of Sapporo near the base of the popular Mt. Moiwa, the vast Sapporo campus of Tokai University covers some 480,000 square meters of hillside and offers spectacular views of the city and surrounds. This unique facility, with stately white buildings housing the latest in educational and research technology surrounded by beautiful landscaping in a natural setting, attracts students from all over Japan, who benefit from the inspiration provided by the stunning seasonal changes of Hokkaido.



## Address

1-1 1-Chome 5-Jo Minami-sawa, Minami-ku,  
Sapporo-shi, Hokkaido 005-8601

## HP

<https://www.u-tokai.ac.jp/english/>



## Schools

### School of international cultural relations

Department of community development  
Department of international communications

### School of biological sciences

Department of biology  
Department of marine biology and sciences

## Facilities



### Tank Lab

The tank lab has tanks of various sizes that are home to tropical fish as well as species such as sea urchins and abalone.



### Tokai Arena

Tokai Arena is the name of the No. 1 gymnasium, built in 2015, which boasts the latest training machines and equipment.



### Cafeteria

The cafeteria is popular with students and is often used for parties and gatherings.



### Cross-country Skiing Course

In the winter months, the campus slopes can be used for cross-country skiing practices.

# Why you can study with peace of mind in Hokkaido

## Scholarships

In addition to support from the Japanese government, some municipalities in Hokkaido and international exchange organizations offer scholarships. Each university also has its own support system.

## Housing

Universities provide student dormitories and student residences where international students can live.

The Comprehensive Renters Insurance system is available for those wishing to move into private accommodations, so it is possible to find housing without the need for a guarantor.

## Japanese language study support

There are many volunteer-run Japanese language classes in the community, so you can learn Japanese after you have arrived in Hokkaido.

## Everyday information and advice

The universities provide a supportive environment for international students. If you have any problems in your daily life, you can consult with the Hokkaido Foreign Resident Support Center.

Hokkaido Foreign Resident Support Center



## Employment support

For international students who wish to work for Japanese companies, the universities collaborate with companies to provide internships at companies, training in business conversation, and job placement assistance.

## Exchange facilities

There are opportunities for people from overseas living in Hokkaido to participate in exchange activities at facilities that also host international exchange events and Japanese language classes.



# The Voices of Overseas Students

## (China)

One of the things I look forward to most during the year is skiing. Hokkaido, which is also known as the “powder paradise,” is a place where people from all over the world gather to enjoy the high-quality powder snow. Forgetting about the stress and hassles of the real world while skiing freely in the pure white world is one of the most enjoyable experiences and moments of my life.

## (China)

Hokkaido is cost-effective because rent is not expensive. I find the people of Hokkaido to be warm and friendly. The people walking on the street as well as the staff in the shops are very friendly. So, I think Hokkaido provides an environment where one can focus on one’s own interests.

## (Cambodia)

Students can rent accommodations themselves, as apartments and condominiums in Hokkaido are affordable. The food is delicious, and Hokkaido is famous for its sushi and sashimi. These are fresh and very tasty. I would also recommend soup curry.

## (Vietnam)

I believe Hokkaido can be summed up in three phrases: “harsh winters,” “white snow,” and “beautiful nature.” These three characteristics make Hokkaido an ideal tourist destination for everyone.

## (South Korea)

Hokkaido has provided me with the best experience I have ever had in Japan. The best thing about coming to Hokkaido is the cold weather and the great food. Living in Hokkaido was the best experience for me, and I decided to enter graduate school because I wanted to stay in Hokkaido even longer.

## (Indonesia)

Although life in Hokkaido can be difficult for people from other countries where there is no snow in winter, its natural beauty is very attractive. In February, you can experience Japan’s largest winter festival, the Sapporo Snow Festival, besides skiing, ice skating, snow rafting, illumination, and much more.

## Hokkaido Foreign Resident Support Center

Hokkaido Foreign Resident Support Center provides comprehensive consultations on various daily life issues for foreigners residing in Hokkaido.

<http://www.hiecc.or.jp/soudan/> (English, Chinese, Korean and others)

ほっ かい どう がい こく じん そう だん

# 北海道 外国人 相談 センター

## HOKKAIDO FOREIGN RESIDENT SUPPORT CENTER

홋카이도 외국인 상담 센터      北海道外国人咨询/諮詢中心

PUSAT DUKUNGAN PENDUDUK ASING DI HOKKAIDO

TRUNG TÂM HỖ TRỢ NGƯỜI NƯỚC NGOÀI HOKKAIDO

**何でも相談できます！** 無料！

在留資格（ビザ）、労働（問題）、健康保険、年金、税金、運転免許、教育、結婚・離婚など、生活の困りごとについて相談できます。

**ASK US ABOUT ANYTHING!** FREE!

You can consult with us on a variety of daily life issues, such as residence status, work-related issues, health insurance, pension, taxes, driving license, education, marriage, and more.

**我们欢迎任何咨询!** 免费!

在留资格（签证）、劳动（问题）、健康保险、年金、税金、驾照、教育、结婚・离婚等，任何生活上的困惑都可咨询。

**HÃY HỎI CHÚNG TÔI NHÉ!** MIỄN PHÍ!

Có thể tư vấn về: Tư cách lưu trú (visa), vấn đề lao động, bảo hiểm sức khỏe, lương hưu, thuế, bằng lái xe, giáo dục, kết hôn, ly hôn, những khó khăn gặp phải trong cuộc sống v.v.

**MAGTANONG PO SA AMIN!** LIBRE

Maaari kayong kumonsulta sa amin ukol sa iba't-ibang problema sa pang-araw-araw na pamumuhay, gaya ng bisa sa pagtira, problema sa trabaho, health insurance, pensyon, buwis, lisensya sa pagmamaneho, pag-aaral, pagpapakasal, atbp.

**TANYA KAMI TENTANG APAPUN!** GRATIS

Anda dapat berkonsultasi dengan kami mengenai berbagai masalah kehidupan sehari-hari, seperti status kependudukan, masalah yang berhubungan dengan pekerjaan, asuransi kesehatan, pensiun, pajak, SIM, pendidikan, pernikahan, dan lain-lain.

**OPEN HOURS** 🕒 9:00-12:00, 13:00-17:00

| MON<br>月 | TUE<br>火 | WED<br>水 | THU<br>木 | FRI<br>金 | SAT<br>土   | SUN<br>日 |
|----------|----------|----------|----------|----------|------------|----------|
| ← OPEN → |          |          |          |          | ← CLOSED → |          |

土曜日、日曜日、祝日、年末年始（12月29日～1月3日）は休みです。  
※月に1回、休日に相談できます。ホームページをご覧ください。

**CONTACT US!** ☎ 011-200-9595    ✉ support@hiecc.or.jp

Facebook

Instagram

WhatsApp

LINE

Zalo

WeChat

Viber

Telegram

KakaoTalk

Skype